

2

1

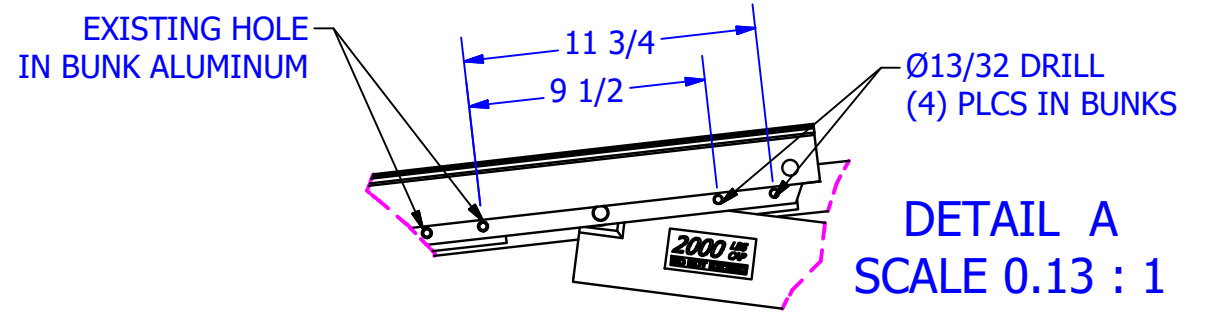
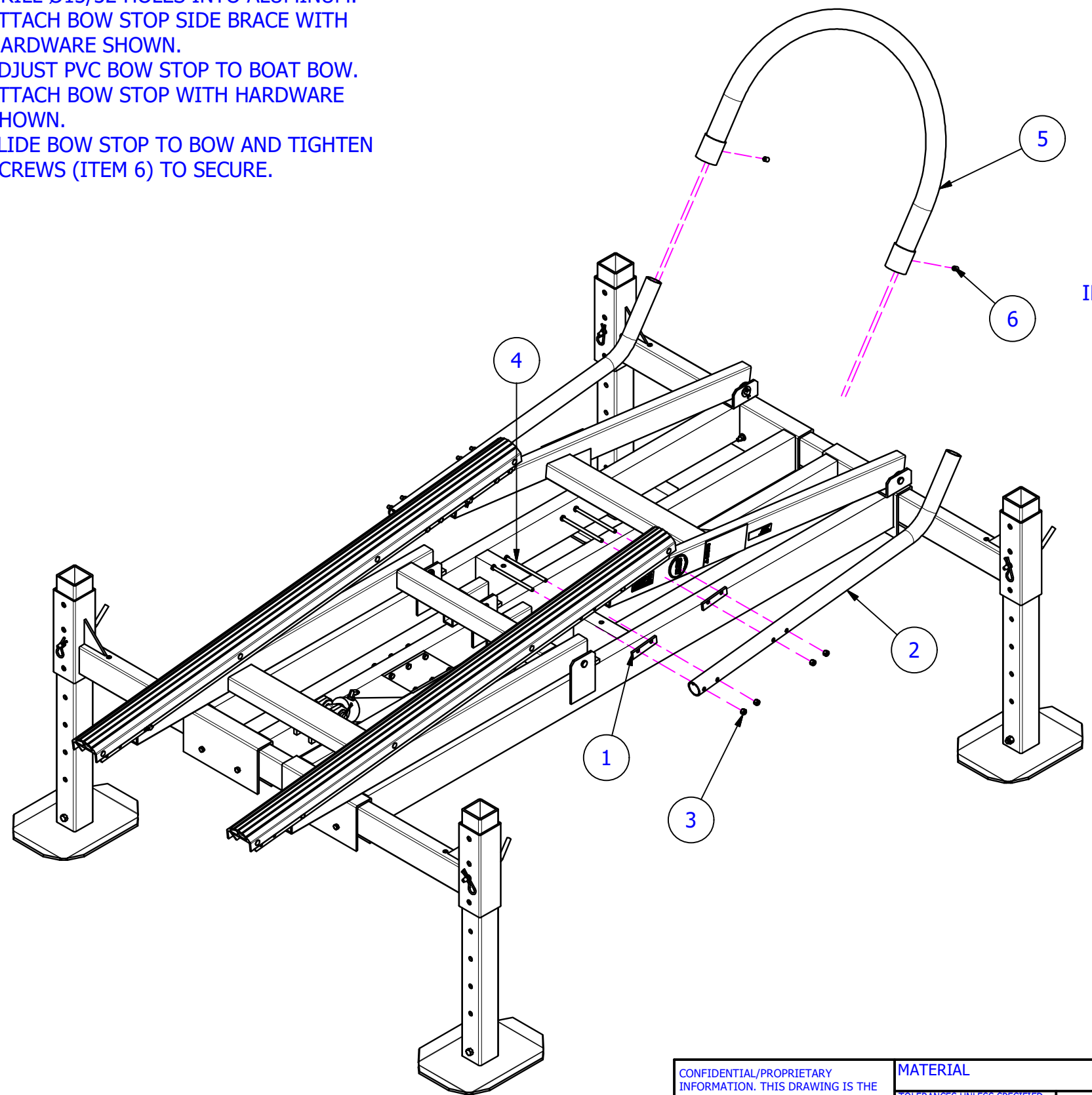
NOTES:

1. MEASURE AND MARK HOLE LOCATIONS AS INDICATED IN DETAIL A.
2. DRILL Ø13/32 HOLES INTO ALUMINUM.
3. ATTACH BOW STOP SIDE BRACE WITH HARDWARE SHOWN.
4. ADJUST PVC BOW STOP TO BOAT BOW.
5. ATTACH BOW STOP WITH HARDWARE SHOWN.
6. SLIDE BOW STOP TO BOW AND TIGHTEN SCREWS (ITEM 6) TO SECURE.

PARTS LIST				
ITEM	PART NUMBER	DESCRIPTION	QTY	BASE UNIT
1	4107886	HL 1.75-2K BOW STOP SIDE BRACE SPACER	4	EA
2	4107883	HL 1.75-2K BOW STOP SIDE BRACE	2	EA
3	5840103	NUT HEX NYLOCK 3/8-16 ALUM	8	EA
4	5896269	HHCS 3/8-16 X 6-1/2 SS	8	EA
5	4107489	HL1.75K-HL2K PVC BOW STOP ASSY GRAY	1	EA
6	5894114	SCREW SET SOC 1/2-13 X 3/4 SS	2	EA

B

B



2

A

A

A

A

CONFIDENTIAL/PROPRIETARY INFORMATION. THIS DRAWING IS THE PROPERTY OF RGC AND IS FURNISHED FOR PURPOSES OF MANUFACTURING AND SHALL NOT BE USED/DISCLOSED BY RECIPIENT FOR ANY OTHER PURPOSE WHATSOEVER.	MATERIAL		INT	DATE		HL1.75-2K PVC BOW STOP			REV -	
	TOLERANCES UNLESS SPECIFIED		DRAWN BY	PDJ		11/4/2019	SCALE 1 / 20	SIZE B		DWG NO. 4107187
	ANGLES	=+/- .5 DEG	CHECKED BY	PDJ		11/4/2019				
	FRACTIONS	=+/- 1/16	APPRVD BY	PDJ		11/4/2019	PAGE 1 OF 1			
.XXX	=+/- .005									
.XX	=+/- .01									
.X	=+/- .03									

2

1

