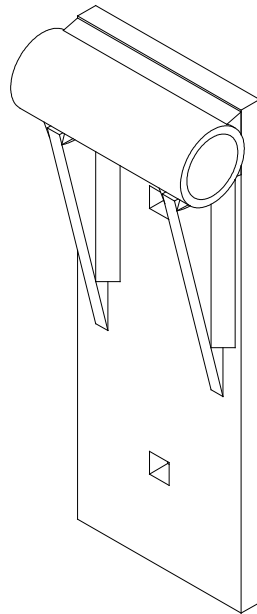




TRUSS DOCK HINGE INSTRUCTIONS

(Applies to P/Ns 4010267 & 4010061)



1 SPECIFICATIONS

1.1

MAXIMUM HINGE ANGLE : +/- 9 DEG

MAXIMUM DOCK SLOPE: +/- 9 DEG = 2" OF RISE FOR EVERY 1' OF RUN

2 INSTALLATION

T-DOCK HINGE ASSEMBLY INSTRUCTIONS

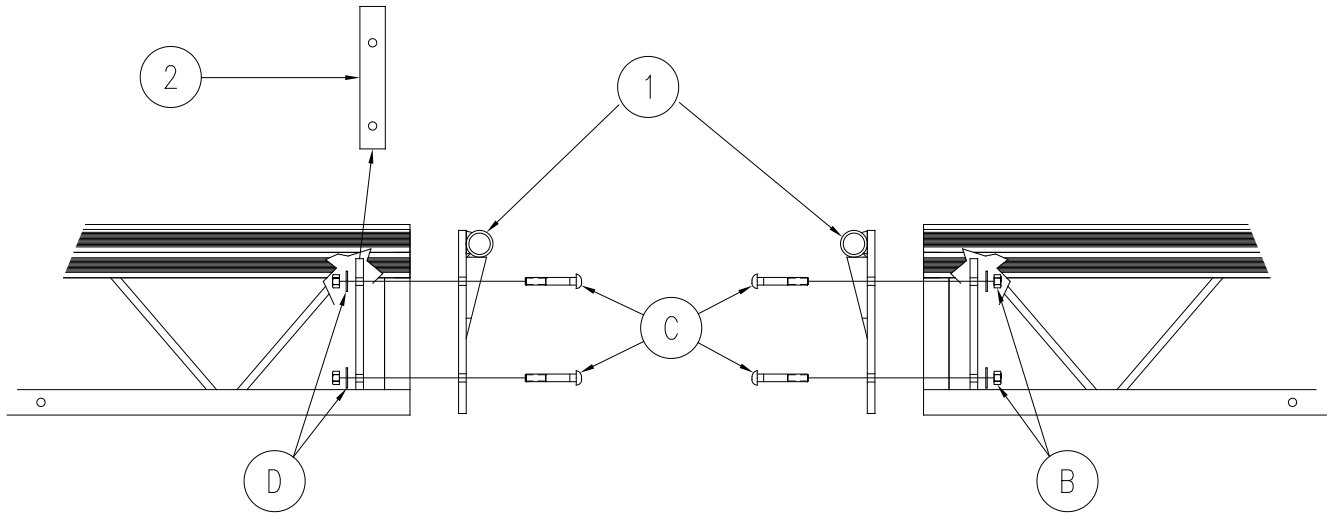


Figure 2-1
T-Dock Hinge Assembly

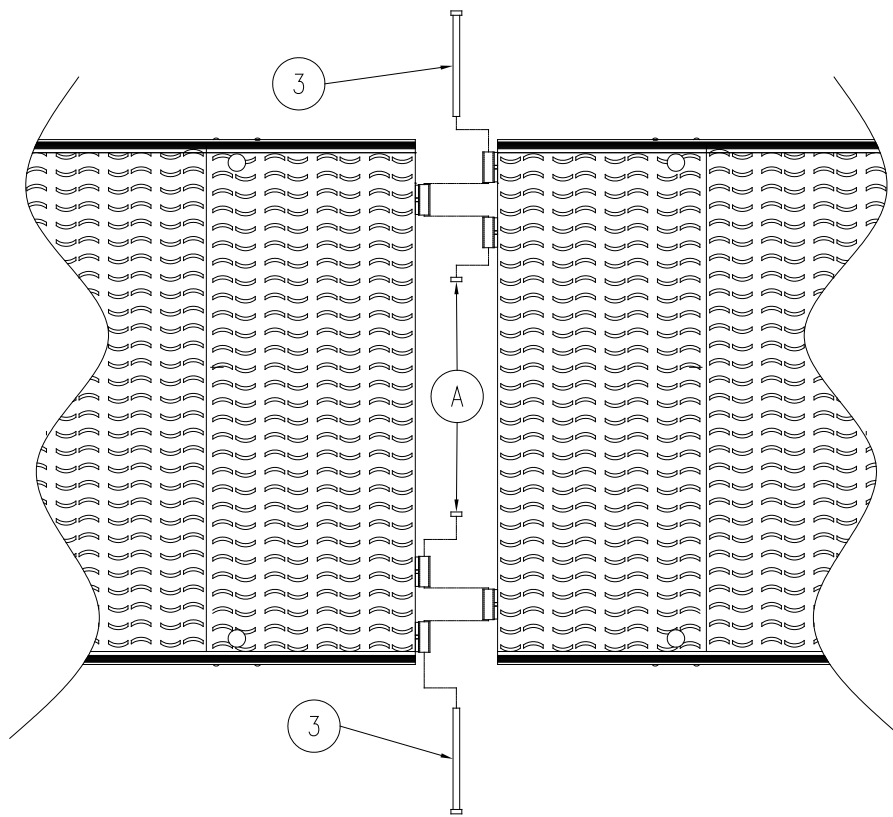


Figure 2-2
T-Dock Hinge Assembly

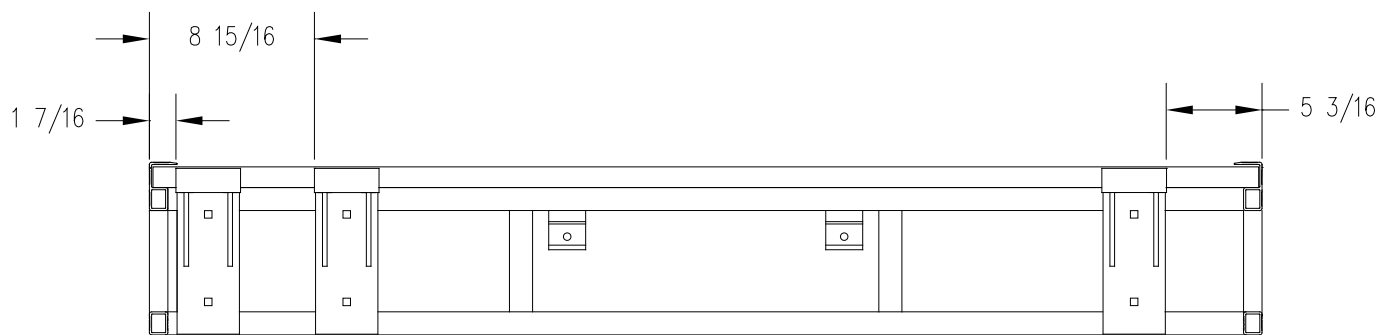


Figure 2-3
T-Dock Hinge Assembly Layout

3 PARTS LISTS

Each reference number in the following parts lists can be matched with the reference number in both the text and illustrations of Section 1, Installation.

3.1 4010061 T-DOCK HINGE KIT 4' & 5' BDL

REF #	PART #	QTY	DESCRIPTION
-	4010267	2	T-DOCK HINGE COP

3.2 4010267 T-DOCK HINGE COP

REF #	PART #	QTY	DESCRIPTION
1	4010273	3	T-DOCK HINGE ASSEMBLY
2	4013526	3	T-DOCK STAIR MOUNT CLAMP
3	4070452	1	F-DOCK HINGE PIN ASSEMBLY
A	5840702	1	3/4" AL SHAFT COLLAR W/ SET SCREW
-	4010270	3	T-DOCK HINGE BOB

3.3 4010270 T-DOCK HINGE BOB

REF #	PART #	QTY	DESCRIPTION
B	5840103	2	3/8-16 ALUMINUM HEX NUT
C	5896323	2	3/8-16 X 2 1/2 SS CARRIAGE BOLT
D	5896406	2	3/8 SS FLAT WASHER

TWO YEAR LIMITED WARRANTY

Reimann & Georger Corporation Marine Products

This product is warranted by RGC® Marine Products to the original purchaser to be free from defects in material and workmanship under normal use for a period of two years from the date of purchase.

During the warranty period, and upon proof of purchase, the product will be repaired or replaced (with the same or similar model) at our option, without charge for either parts or labor when serviced at RGC® Marine Products.

Upon completion of repair, the unit will be returned to the customer freight prepaid. The warranty will not apply to this product if it has been misused, abused, or altered.

NEITHER THIS WARRANTY OR ANY OTHER WARRANTY, EXPRESS OR IMPLIED, INCLUDING IMPLIED WARRANTIES OF MERCHANTABILITY, SHALL EXTEND BEYOND THE WARRANTY PERIOD. NO RESPONSIBILITY IS ASSUMED FOR ANY INCIDENTAL OR CONSEQUENTIAL DAMAGES. SOME STATES DO NOT ALLOW EXCLUSION OR LIMITATION OF INCIDENTAL OR CONSEQUENTIAL DAMAGES, SO THE ABOVE LIMITATIONS OR EXCLUSIONS MAY NOT APPLY TO YOU.

This warranty gives you specific legal rights, and you may also have other rights which vary from state to state.