

**GOOD TIMES?
YOU GOT THIS.**



1-800-831-5438
WWW.RGCMARINE.COM
SALES@RGCMARINE.COM

WELCOME

Welcome to RGC Marine, and welcome back to loving life on the water.

Whether looking for a dock that looks as good on the water as it does from your window, or one that remains as steady as your navigational skills, RGC docks provide durable and eye-pleasing structures built to last—and make your neighbors take notice.

With top-grade aluminum docks, our marine products withstand tough conditions and ensure your boat will remain steady. The strongest welds outlast the competition's and provide the kind of support your investment deserves.

There's no room for compromise when it comes to your nautical lifestyle. With RGC, your boat is moored with style backed by substantive construction.

RGC's American made and assembled docks add an unmatched layer of protection and class perfectly suited for your lifestyle and come with a 15-year limited warranty on aluminum materials in freshwater applications.

Welcome, again, to RGC. We're proud to work with you and we'll see you on the water soon.

TABLE OF CONTENTS

● How to Choose Your Dock	PAGE 2
● RGC's Quick Ship Collection	PAGE 2
● Truss Docks	PAGE 3-4
● Truss Docks Options	PAGE 5-6
● Truss Dock Sample Plans	PAGE 7
● Heavy Duty Docks	PAGE 8
● Heavy Duty Dock Options	PAGE 9-10

OUR QUALITY PLEDGE TO YOU

At RGC, quality is more than a word — it's a standard by which we promise to work, to consistently manufacture the best product for the most demanding environments. We continually invest in our processes, technology and people to bring the highest quality to every customer worldwide.

RGC MARINE

1849 Harlem Road | Buffalo, NY 14212
1-800-831-5438 | 716-895-1547 (fax)
www.RGCMarine.com | sales@RGCMarine.com



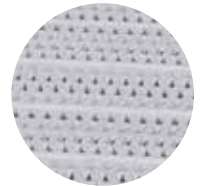
WHICH OPTION IS RIGHT FOR YOU?

Photo courtesy of

Boats come in all shapes and sizes - why shouldn't docks? But how do you know which one is best suited for your needs? Whether you have a large space or a small strip, RGC has a dock that will meet your exact standards and look great in the process.

RGC'S TRUSS DOCKS FEATURE:

- Durable, rugged construction that can withstand heavy traffic but lightweight for easy removal at the end of the season
- Adaptable and adjustable configuration to best suit your space and your waterfront access
- Easy-to-adjust screw legs mean quick, simple tweaks can be made to account for fluctuating water levels without having to get into the water



RGC'S HEAVY DUTY DOCKS FEATURE:

- The easiest configuration for combinations of a whole fleet of watercraft, from pontoon boats and PWCs to seaplanes
- A wide variety of width options to securely and attractively fit into any marina or slip
- A luxuriously long 20' span between legs or pilings
- An industry-favored reputation - you'll find RGC heavy duty docks in most commercial marinas



RGC MARINE'S QUICK SHIP COLLECTION*

Whether hitting the water with a new boat for the first time or preparing for your 10th season with a family heirloom, the right dock makes your experience far more enjoyable. So why spend even a moment longer than absolutely necessary waiting for a new dock?

With RGC Marine's Quick Ship Collection*, select any product from this collection during the months of May through September and we'll have your order shipped out in three days. You'll be using your new dock faster than your neighbors can get their motor tuned and ready to hit the water. No waiting, no delays, just faster shipment of a product you know will meet your exacting demands.

There's no need to wait for a quality, American-made dock shipped directly from the manufacturer to get the most out of your boat. Use RGC Marine's Quick Ship service and start living the dream sooner.

*Quick Ship service limited to a maximum of two of the same item per order. Orders that include Quick Ship as well as standard items will ship as one order via standard shipping. For exact Quick Ship size and model selections, see price list.



**GOOD LOOKS? CHECK.
STRONG CONSTRUCTION? CHECK.
WHAT MORE COULD YOU WANT?**

RGC'S TRUSS DOCKS PROVE STYLE DOESN'T HAVE TO BE SACRIFICED FOR SUBSTANCE WHEN IT COMES TO HARDWORKING DOCKS THAT LOOK GOOD FOR THE LONG HAUL

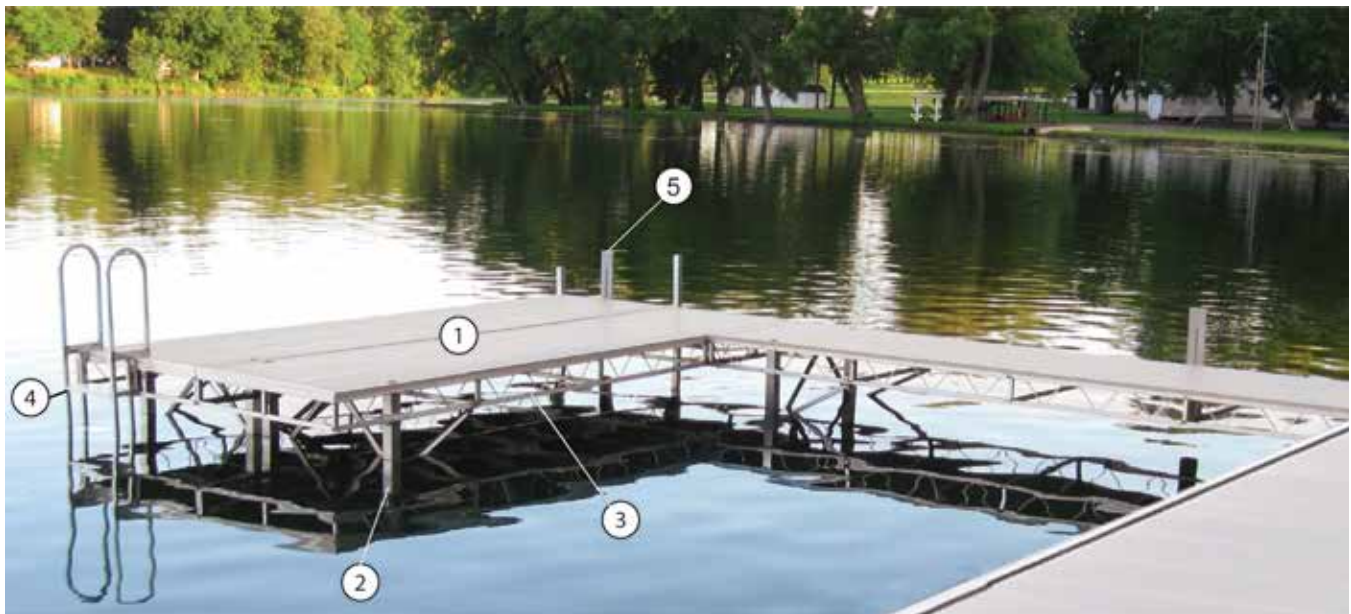
With a framework of marine-grade aluminum topped with your choice of aluminum or DeckWave™ poly decking, RGC's Truss Docks let waves roll right through to keep your dock sitting pretty for years to come. Assembled with the strongest possible welds for reinforced durability, yet light enough to be removed, hassle-free, at the end of each season, these docks are a welcomed addition to your marine life.

APPLICATIONS:

- Designed specifically to work well in both residential and light marina installations
- Truss Docks are adaptable to various water depths and shoreline conditions
- Sections are easily arranged to meet esthetic and functional requirements

FEATURES AND BENEFITS:

- Truss Docks, Sun Decks and Dock Ramps are all built with the same marine-grade aluminum for minimal maintenance and can be easily repositioned to meet your layout needs
- A truss design on RGC's Truss Docks and Sun Decks let waves roll through without turbulence
- Adjustable external leg kits are offered in 30", 48", 72" and 96" options to meet your needs
- Screw Adjustable Legs make for easy alteration while standing atop the deck's surface to accommodate water up to 11' deep
- Quick mounting brackets make adding to or changing the shape of your dock a snap
- Easy to customize with a wide variety of options and accessories
- 15-year limited warranty on aluminum materials and workmanship



1. **Decking** - is available in durable powder-coated aluminum or DeckWave™ poly decking to best suit your needs.
2. **Screw Adjustable Legs** - allow independent leveling of dock sections from the top of the decking. Available in five adjustable lengths.
3. **Leg Bracing** - provides additional support and rigidity when long extension legs are required.
4. **Truss Dock Ladders** - are offered in three-step (63") and four-step (74") models and are fabricated with marine-grade aluminum and durable welds.
5. **Vertical Bumpers** - are 30" high and protect your dock, as well as your boat.

TRUSS DOCK OPTIONS

GET ALL THE ACCESSORIES TO MAKE YOUR DOCK EXACTLY HOW YOU WANT IT

FROM STEPS TO BUMPERS AND KAYAK RACKS TO ADJUSTABLE LEGS, BUILD THE TRUSS DOCK TO LIVE UP TO YOUR EXPECTATIONS WITHOUT EXCEPTIONS

TRUSS DOCK OPTIONS:



Foot Plates — keep your dock secure even in shallower water to ensure a safe environment for boating. Suitable for use on adjustable T-Dock legs.



9" Corner Bumper — protects the corner of your dock from other marina traffic just in case other drivers aren't as careful and cautious as you'd like. Constructed from reliable and long-lasting vinyl, the bumper attaches easily and keeps corners safe.



Kayak Rack — because not all seafaring fun requires an engine. These easy-to-install racks provide a safe and convenient way to store kayaks right on your dock for immediate access.



30" Vertical Bumper — to protect your dock from accidental bumps and dings from passing traffic or choppy water.



Truss Dock Ladders — attach easily, are available in three-step (63") and four-step (74") models and fabricated with marine-grade aluminum and durable welds.



Floats - convert your stationary Truss Dock into a floating Truss Dock with foam filled floats. All floats meet U.S. Army Corps of Engineers regulations.



Fixed and Hinged Seawall Brackets — made of the same durable marine-grade aluminum and durable welds, these brackets are sold in pairs for a secure connection of Truss Dock sections to a seawall to keep docks in place seamlessly.

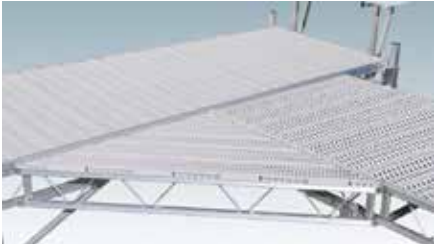


Pile Guides with PVC linings — let you secure your floating dock sections to pilings. Available to fit 1-7/8" and 2-7/8" pipe.

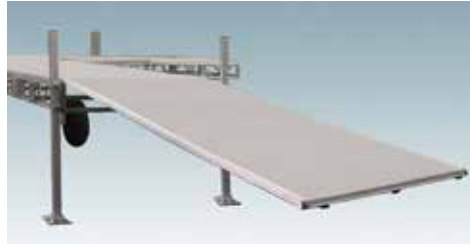
SPECIFICATIONS:

Model	T-Dock Sections (2 Leg Holes)					Sun Decks (4 Leg Holes)				Dock Ramps					
Size	2'x8'	2'x16'	4'x12'	4'x16'	5'x16'	4'x8'	8'x8'	6'x12'	8'x12'	4'x6'	4'x8'	4'x12'	4'x16'	6'x8'	
Powder-Coated Aluminum Decking	X	X			X	X	X	X	X	X	X		X	---	X
DeckWave Poly Decking Gray	X	X			X	X	X	X	X	X	X		X	X	---
DeckWave Poly Decking Beige	X	X	X	X	X	X	X	X	X	X	X	X	X	X	---

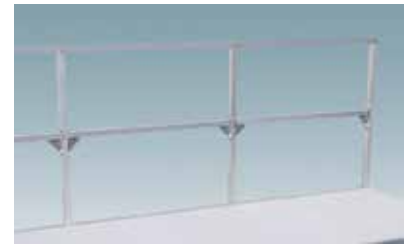
CHOOSE FROM A WIDE VARIETY OF ACCESSORIES SPECIFICALLY DESIGNED FOR YOUR TRUSS DOCK



Dock Corner Wedge — made of durable marine-grade aluminum and available in powder-coated aluminum or poly decking to match your dock and complete your installation.



4' Wide Dock Ramps — made from the same marine-grade aluminum as RGC's docks, these ramps are available with aluminum or poly decking and are hinged to cover slopes of varying degrees.



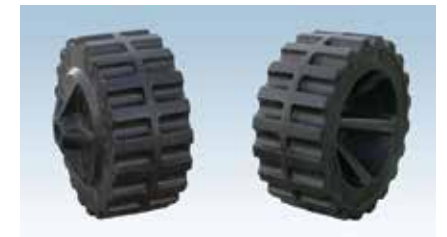
Double Rail Dock Railing — for an extra layer of protection and stability, this easy-to-install railing gives your guests a place to stand and admire the sunset or wait for their turn on the boat.



10" Cleats — install easily to allow friends and fellow boaters to enjoy your dock for a day or weekend. The more the merrier, especially when there's more room for secure docking.



Aluminum Powder-Coated Dock Bench — because sometimes you just want to pause and take a look at the lovely scenery. Designed for easy installation and many years of enjoyment, all while complimenting your dock.



Poly Wheels — RGC's exclusive design provides reliable 22" poly wheels to keep things moving even when the lake bed is soft. RGC's wheels provide extra stability and reliability and make it easier to move your dock into place and remove it when not in use.

EXTERNAL LEGS

SPECIFICATIONS:

Leg Height	30"	48"	72"	96"
Water Depth	0" - 13"	0" - 31"	0" - 55"	48" - 79"
Adjustable	13"	31"	55"	79"

Require bracing kit when more than 6' of leg is below top of deck.



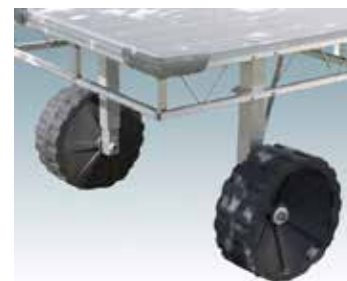
Truss Dock External Legs - allow for height adjustments and leveling on even on sloped lakebeds. Available in four adjustable lengths (see chart).

SCREW ADJUSTABLE LEGS

SPECIFICATIONS:

Leg Height	Shallow	Medium	Deep	X-Deep	2X-Deep
With Wheels	11" - 22"	20" - 37"	35" - 66"	48" - 90"	72" - 135"
With Feet	3" - 14"	12" - 29"	27" - 58"	39" - 82"	63" - 127"
Adjustable	11"	17"	31"	43"	64"

Fit your dock with the right depth legs, and with feet or wheels.

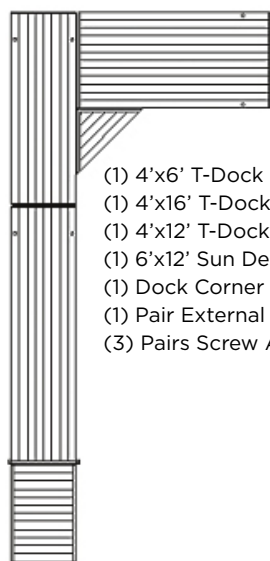


Screw Adjustable Legs - permit leveling of individual dock sections from on top of dock. Offered in five lengths (see chart).

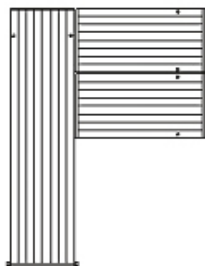
CLOSE YOUR EYES AND ENVISION YOUR DOCK'S LAYOUT

GOT IT? GET IT!

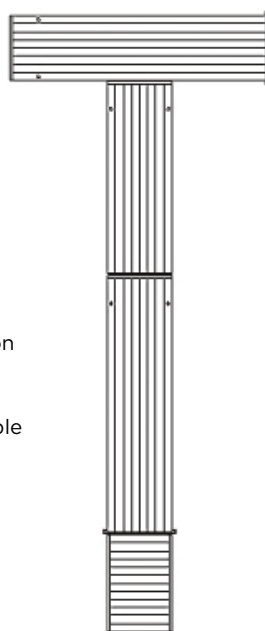
If you want it, you can have it. There's an endless variety of dock configurations to meet your needs, desires and any marine-applicable requirements, all without compromising the structural integrity of your dock or your enjoyment of it. Personalize your water experience and let our docks match your ideals to fit your shoreline and boat lift and still make the neighbors take notice.



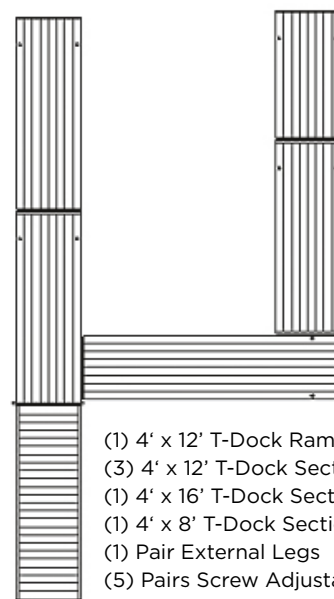
- (1) 4'x6' T-Dock Ramp
- (1) 4'x16' T-Dock Section
- (1) 4'x12' T-Dock Section
- (1) 6'x12' Sun Deck
- (1) Dock Corner Wedge
- (1) Pair External Legs
- (3) Pairs Screw Adjustable Legs



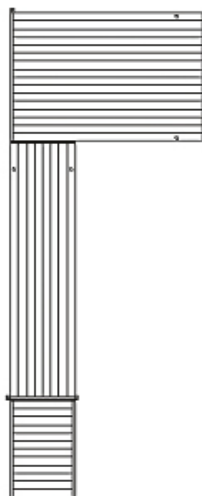
- (1) 4' x 16' T-Dock Section
- (2) 4' x 8' Sun Decks
- (1) Pair External Legs
- (3) Pairs Screw Adjustable



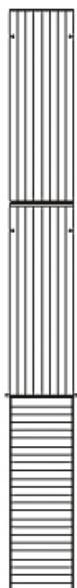
- (1) 4' x 6' T-Dock Ramp
- (2) 4' x 16' T-Dock Sections
- (1) 4' x 12' T-Dock Section
- (2) Pair External Legs
- (3) Pairs Screw Adjustable Legs



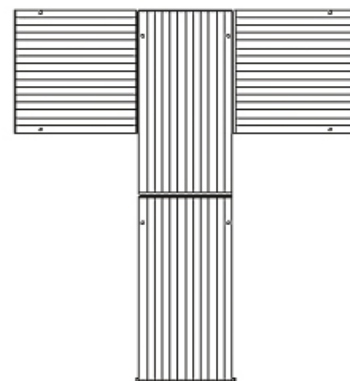
- (1) 4' x 12' T-Dock Ramp
- (3) 4' x 12' T-Dock Section
- (1) 4' x 16' T-Dock Section
- (1) 4' x 8' T-Dock Section
- (1) Pair External Legs
- (5) Pairs Screw Adjustable Legs



- (1) 4' x 6' T-Dock Ramp
- (1) 4' x 16' T-Dock Section
- (1) 8' x 12' Sun Deck
- (3) External Legs
- (2) Pairs Screw Adjustable Legs



- (1) 4' x 12' T-Dock Ramp
- (2) 4' x 12' T-Dock Sections
- (1) Pair External Legs
- (2) Pairs Screw Adjustable Legs



- (2) 6' x 12' Sun Decks
- (2) 8' x 8' Sun Decks
- (1) Pair External Legs
- (4) Pairs Screw Adjustable Legs

HIGH-TRAFFIC AREA? HIGH WAKE MARINE? REST ASSURED, YOUR DOCK IS READY

DESIGNED WITH HIGH-ACTIVITY WATERWAYS IN MIND, RGC'S HEAVY DUTY DOCKS CAN WITHSTAND THE BUSIEST MARINA



RGC's Heavy Duty Docks dazzle onlookers, and not just from the gleam of the marine-grade aluminum. With stainless steel fasteners for added durability, these docks will outlast the competition's while requiring minimal maintenance. Custom extrusions and the most secure welds possible ensure our docks stand up to the biggest tests. Solid-side walls make our docks unflappable and, thanks to easy installation, you can enjoy your dock even faster.

APPLICATIONS:

- Perfect for marinas, waterside condo communities and residential installations
- Easily adaptable for various water depths and shorelines and can be configured to accommodate break walls. External legs or floats offer further installation flexibility
- Wide variety of configurations to best suit your needs and requirements

FEATURES AND BENEFITS:

- Built from the most reliable marine-grade aluminum components and stainless steel fasteners
- Custom Aluminum Extrusions engineered for peak strength; rigidity provides outstanding integrity
- Easy-to-assemble sections can be modified and repositioned without needing special tools
- Available in your choice of powder-coated aluminum or DeckWave™ poly decking

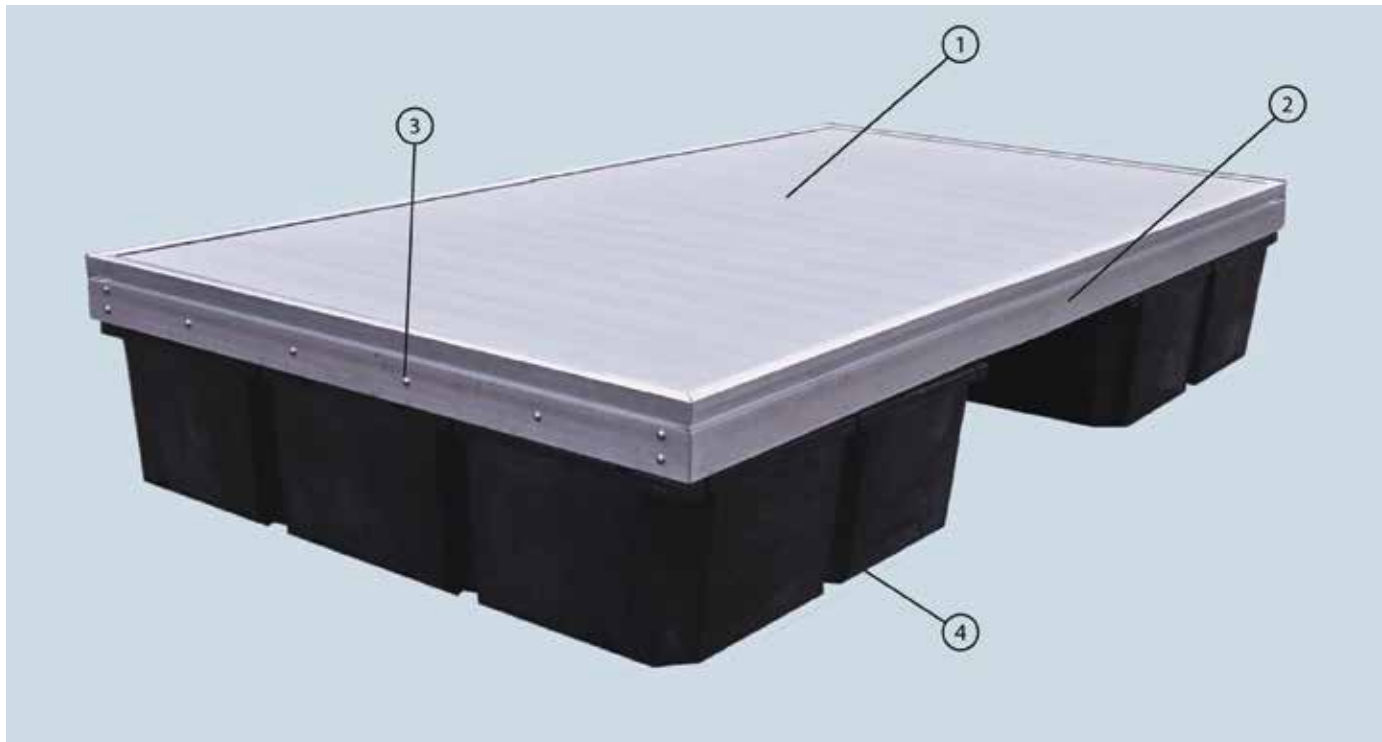
- External Legs offered in 30", 48", 72", 96" and 120" lengths
- Pivoting Foot Plates offer secure installation even along sloped lakebeds
- All floats meet U.S. Army Corps of Engineers regulation #36 CFR Part 327 and are foam filled using 1 to 1.5 density EPS
- Floating docks are suitable for use in waters of any depth
- 15-year limited warranty on aluminum materials and workmanship in fresh water applications

SPECIFICATIONS:

Model	Powder-Coated Aluminum Decking	DeckWave™ Poly Decking
Dock Sections		
1' wide x 8', 12' or 20' long	--	X
2' wide x 20' long	--	X
3' wide x 10', 12', 14', 16', 18' or 20' long	X	X
4' wide x 10', 12', 14', 16', 18' or 20' long	X	X
6' wide x 10', 12', 14', 16', 18' or 20' long	X	X
Sun Decks		
8' wide x 10', 12', 16' or 20' long	X	X
Ramp		
4' wide x 16' long	--	X

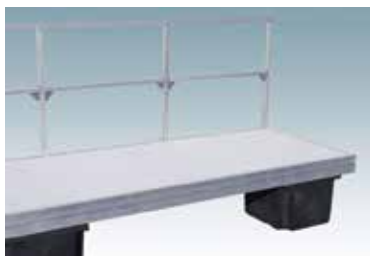
GET THE MOST OF YOUR RGC HEAVY DUTY DOCK

SELECT THE OPTIONS TO BEST SUIT YOUR NEEDS AND THE REQUIREMENTS OF YOUR MARINA



1. **Decking** – is available in durable powder-coated aluminum or DeckWave™ poly decking to best suit your needs.
2. **Frames** – are manufactured of extruded marine-grade aluminum for superior strength and performance.
3. **Stainless Steel Hardware** – is used throughout the frame to ensure longevity.
4. **Dock Floats** – are offered to create heavy duty floating docks, which are ideal for applications where the water level fluctuates.

Not shown, but also available, are External Dock Legs.



Double Rail Dock Railing – for an extra measure of protection and stability, this easy-to-install railing gives your guests a place to safely stand and admire the sunset or wait for their turn on the boat.



HD Dock Pile Guides with PVC Sleeve Lining – to easily install your floating dock sections to pilings with a secure grip and minimal wear. Available to fit 1-7/8" and 2-7/8" pipe to best fit your needs.

HEAVY DUTY DOCK OPTIONS

HEAVY-DUTY DOCK OPTIONS:



Floats - convert your stationary Heavy Duty Dock into a floating Heavy Duty Dock with foam-filled floats. All floats meet U.S. Army Corps of Engineers regulations.



10" Cleats - install easily to provide secure docking for friends and fellow boaters to enjoy your dock for a day or weekend.



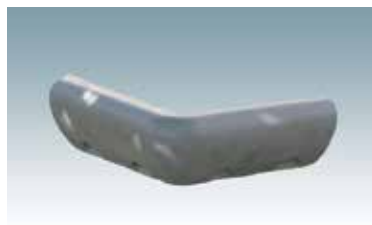
Ramp Tread Plate — featuring sturdy welds, these plates provide a smooth transition from the ramp to the ground and measure 48" wide by 12" deep.



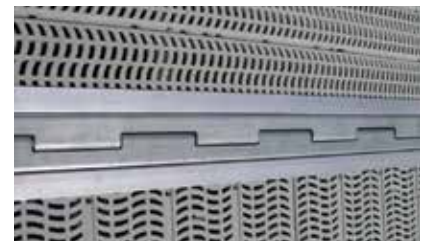
Kayak Rack — because not all seafaring fun requires an engine. These easy-to-install racks provide a safe and convenient way to store kayaks right on your dock for immediate access.



Heavy Duty Dock Ladders - attach easily, are available in three-step (63") and four-step (74") models and fabricated with marine-grade aluminum and durable welds.



Vinyl Corner Bumpers — protect the corners of your dock from other marina traffic just in case other drivers aren't as careful and cautious as you'd like. Constructed from reliable and long-lasting vinyl, the bumper attaches easily and keeps corners safe.



HD Dock Hinge Kits —for easy connection among floating dock sections. Available in 3', 4', 6' and 8' lengths to meet your specific needs.



Heavy Duty Dock Pile Support Brackets — Secure Heavy Duty dock sections to pilings from underneath the deck. Steel brackets are available in 3', 4' and 6' widths for secure installation.



Vinyl Rub Rail Strip — attaches to the side of your dock for extra protection from bumps and dings from passing traffic and designed to keep your dock looking its best.



30" Wide Stairs — sold in three-, four-, five-, six-, eight- and 10-step models, all with adjustable legs to accommodate your dock and water levels. The steps have treads on top for slip-resistant footing for safety.



HD Dock External Adjustable Legs — for safe and easy adjustment of your dock height. Available in 30", 48", 72", 96" and 120" lengths to use with Eternal Dock Leg Support Frame and suitable to meet your specific needs.